

JOINT STATE GOVERNMENT COMMISSION

General Assembly of the Commonwealth of Pennsylvania

INSTRUCTIONAL OUTPUT AND FACULTY SALARY COSTS OF THE STATE-RELATED UNIVERSITIES

**STAFF ANALYSIS OF 2019-20
DATA REPORTED UNDER THE PUBLIC SCHOOL CODE OF 1949**

FEBRUARY 2021



*Serving the General Assembly of the
Commonwealth of Pennsylvania Since 1937*

REPORT

*Instructional Output and Faculty Salary Costs
of the State-Related Universities*

Project Manager:

Bryan W. DeWalt, Public Policy Analyst

Project Staff:

Wendy L. Baker, Executive Assistant

The report is also available at <http://jsg.legis.state.pa.us>

JOINT STATE GOVERNMENT COMMISSION

Room 108 Finance Building
613 North Street
Harrisburg, PA 17120-0108

Telephone: 717-787-4397
Fax: 717-783-9380
E-mail: jntst02@legis.state.pa.us
Website: <http://jsg.legis.state.pa.us>

The Joint State Government Commission was created in 1937 as the primary and central non-partisan, bicameral research, and policy development agency for the General Assembly of Pennsylvania.¹

A fourteen-member Executive Committee comprised of the leadership of both the House of Representatives and the Senate oversees the Commission. The seven Executive Committee members from the House of Representatives are the Speaker, the Majority and Minority Leaders, the Majority and Minority Whips, and the Majority and Minority Caucus Chairs. The seven Executive Committee members from the Senate are the President Pro Tempore, the Majority and Minority Leaders, the Majority and Minority Whips, and the Majority and Minority Caucus Chairs. By statute, the Executive Committee selects a chairman of the Commission from among the members of the General Assembly. Historically, the Executive Committee has also selected a Vice-Chair or Treasurer, or both, for the Commission.

The studies conducted by the Commission are authorized by statute or by a simple or joint resolution. In general, the Commission has the power to conduct investigations, study issues, and gather information as directed by the General Assembly. The Commission provides in-depth research on a variety of topics, crafts recommendations to improve public policy and statutory law, and works closely with legislators and their staff.

A Commission study may involve the appointment of a legislative task force, composed of a specified number of legislators from the House of Representatives or the Senate, or both, as set forth in the enabling statute or resolution. In addition to following the progress of a particular study, the principal role of a task force is to determine whether to authorize the publication of any report resulting from the study and the introduction of any proposed legislation contained in the report. However, task force authorization does not necessarily reflect endorsement of all the findings and recommendations contained in a report.

Some studies involve an appointed advisory committee of professionals or interested parties from across the Commonwealth with expertise in a particular topic; others are managed exclusively by Commission staff with the informal involvement of representatives of those entities that can provide insight and information regarding the particular topic. When a study involves an advisory committee, the Commission seeks consensus among the members.² Although an advisory committee member may represent a particular department, agency, association, or group, such representation does not necessarily reflect the endorsement of the department, agency, association, or group of all the findings and recommendations contained in a study report.

¹ Act of July 1, 1937 (P.L.2460, No.459); 46 P.S. §§ 65–69.

² Consensus does not necessarily reflect unanimity among the advisory committee members on each individual policy or legislative recommendation. At a minimum, it reflects the views of a substantial majority of the advisory committee, gained after lengthy review and discussion.

Over the years, nearly one thousand individuals from across the Commonwealth have served as members of the Commission's numerous advisory committees or have assisted the Commission with its studies. Members of advisory committees bring a wide range of knowledge and experience to deliberations involving a particular study. Individuals from countless backgrounds have contributed to the work of the Commission, such as attorneys, judges, professors and other educators, state and local officials, physicians and other health care professionals, business and community leaders, service providers, administrators and other professionals, law enforcement personnel, and concerned citizens. In addition, members of advisory committees donate their time to serve the public good; they are not compensated for their service as members. Consequently, the Commonwealth receives the financial benefit of such volunteerism, along with their shared expertise in developing statutory language and public policy recommendations to improve the law in Pennsylvania.

The Commission periodically reports its findings and recommendations, along with any proposed legislation, to the General Assembly. Certain studies have specific timelines for the publication of a report, as in the case of a discrete or timely topic; other studies, given their complex or considerable nature, are ongoing and involve the publication of periodic reports. Completion of a study, or a particular aspect of an ongoing study, generally results in the publication of a report setting forth background material, policy recommendations, and proposed legislation. However, the release of a report by the Commission does not necessarily reflect the endorsement by the members of the Executive Committee, or the Chair or Vice-Chair of the Commission, of all the findings, recommendations, or conclusions contained in the report. A report containing proposed legislation may also contain official comments, which may be used to construe or apply its provisions.³

Since its inception, the Commission has published almost 400 reports on a sweeping range of topics, including administrative law and procedure; agriculture; athletics and sports; banks and banking; commerce and trade; the commercial code; crimes and offenses; decedents, estates, and fiduciaries; detectives and private police; domestic relations; education; elections; eminent domain; environmental resources; escheats; fish; forests, waters, and state parks; game; health and safety; historical sites and museums; insolvency and assignments; insurance; the judiciary and judicial procedure; labor; law and justice; the legislature; liquor; mechanics' liens; mental health; military affairs; mines and mining; municipalities; prisons and parole; procurement; state-licensed professions and occupations; public utilities; public welfare; real and personal property; state government; taxation and fiscal affairs; transportation; vehicles; and workers' compensation.

Following the completion of a report, subsequent action on the part of the Commission may be required, and, as necessary, the Commission will draft legislation and statutory amendments, update research, track legislation through the legislative process, attend hearings, and answer questions from legislators, legislative staff, interest groups, and constituents.

³. 1 Pa.C.S. § 1939.



General Assembly of the Commonwealth of Pennsylvania

JOINT STATE GOVERNMENT COMMISSION

Room 108 – Finance Building

Harrisburg, Pa 17120

717-787-4397

Fax 717-783-9380

<http://jsg.legis.state.pa.us/>

February 2021

EXECUTIVE COMMITTEE

Senate Members:

JACOB D. CORMAN, III

President Pro Tempore

KIM L. WARD

Majority Leader

JAY COSTA, JR.

Minority Leader

JOHN R. GORDNER

Majority Whip

ANTHONY H. WILLIAMS

Minority Whip

ROBERT B. MENSCH

Chair, Majority Caucus

WAYNE D. FONTANA

Chair, Minority Caucus

House Members:

BRYAN D. CUTLER

Speaker

KERRY A. BENNINGHOFF

Majority Leader

JOANNA E. MCCLINTON

Minority Leader

DONNA OBERLANDER

Majority Whip

JORDAN A. HARRIS

Minority Whip

GEORGE DUNBAR

Chair, Majority Caucus

DAN L. MILLER

Chair, Minority Caucus

Administrative Staff:

GLENN J. PASEWICZ

Executive Director

YVONNE M. HURSH

Counsel

To the Members of the General Assembly of Pennsylvania:

Pursuant to the Pennsylvania Public School Code of 1949, the Instructional Output and Faculty Salary Costs of the State-related Universities is an annual statistical comparison of full-time equivalent student levels, degrees conferred, and average workweek hours and instructional salary of faculty, as reported by the universities and compiled by our staff.

This year's report, the 48th of the annual volumes, differs significantly from the previous 47. Act 50 of 2020 eliminated the requirement for the PASSHE universities to report their data to the Commission. They are, henceforth, no longer included.

Sincerely,

Glenn J. Pasewicz
Executive Director

48th Annual Report

This report summarizes the instructional outputs, instructional faculty salary costs, tuition, and Commonwealth instructional appropriations for Pennsylvania's State-related universities. Act 50 of 2020 eliminated the requirement for the PASSHE universities to report their data to the Commission. Consequently, these annual reports will no longer include information from PASSHE universities.

The report is based primarily on data reported by Pennsylvania's public universities to the Pennsylvania General Assembly, as required by the Public-School Code. These data include student credit hours and degrees, and faculty salaries and workweek activities. The report includes instructional faculty salaries but does not include noninstructional faculty salaries. Therefore, average faculty salaries in the report cannot be compared to those reported in other places. In addition, since the university data do not include non-salary expenditures, the report does not summarize total instructional costs for the universities. Data on tuition and Commonwealth instructional appropriations supplement the university data.

Levels of data for 2019-20 and data trends for 2014-15 to 2019-20 are presented. Readers are cautioned to use the current historical tables for prior years' data, as some previous data have been revised in these tables.

Student credit hour and salary data are combined for the computation of a measure of cost efficiency: instructional faculty salary cost per full time equivalent student. Tuition and instructional appropriation data are combined for the computation of a measure of cost sharing: the percentage of total instructional revenues covered by instructional appropriations.

This report is intended for use by a variety of persons or groups: by legislators for making appropriation decisions; by university administrators for evaluating policies related to faculty outputs, salaries and workloads; and by Pennsylvania citizens, for making informed judgments about the levels and shares of costs related to public higher education in the Commonwealth.

STATE-RELATED UNIVERSITIES AND BRANCH CAMPUSES BY COUNTY

Lincoln (Chester)

Penn State University Park (Centre)

Branch Campuses

Abington (Montgomery)
Altoona (Blair)
Beaver (Beaver)
Behrend College (Erie)
Berks (Berks)
Brandywine (Delaware)
DuBois (Clearfield)
Eberly (Fayette)
Great Valley (Chester)
Greater Allegheny (Allegheny)
Harrisburg (Dauphin)
Hazleton (Luzerne)
Lehigh Valley (Lehigh)
Mont Alto (Franklin)
New Kensington (Westmoreland)
Schuylkill (Schuylkill)
Shenango (Mercer)
Wilkes-Barre (Luzerne)
Worthington Scranton (Lackawanna)
York (York)

Dickinson School of Law (Cumberland)**
Milton S. Hershey Medical Center (Dauphin)*
Pennsylvania College of Technology (Lycoming)**

Pittsburgh (Allegheny)*

Branch Campuses

Bradford Campus (McKean)
Greensburg Campus (Westmoreland)
Johnstown Campus (Cambria)
Titusville Campus (Crawford)

Temple (Philadelphia)*

Branch Campuses

Ambler Campus (Montgomery)
Harrisburg Center (Dauphin)

* Medical School data not included in this report.

** Not included in this report.

TABLE OF CONTENTS

STATE-RELATED UNIVERSITIES

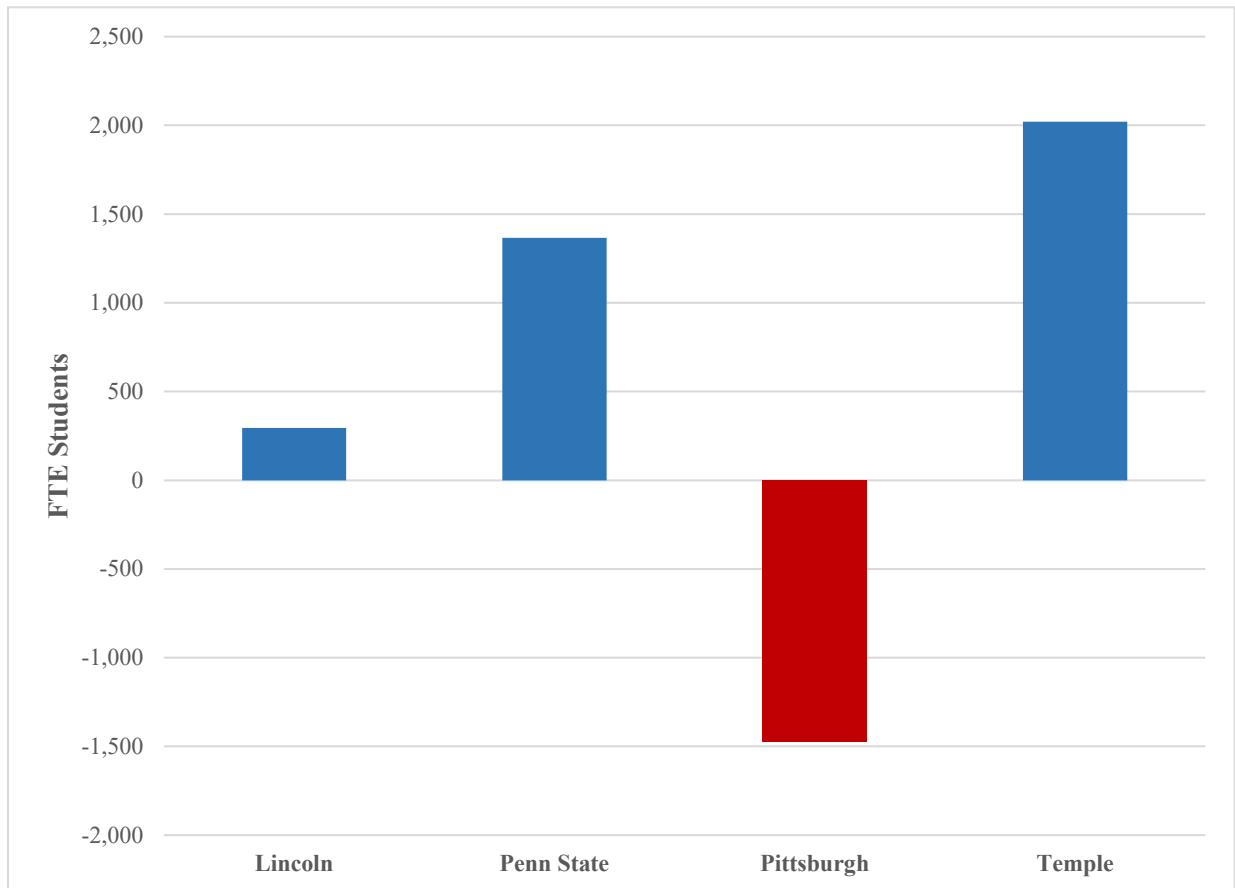
FTE STUDENT ENROLLMENT CHANGES 2014-15 to 2019-20	1
--	----------

CURRENT YEAR DATA TABLES

Table 1: Full-Time Equivalent Students by Academic Level	4
Table 2: Full-Time Equivalent Students by Academic Division and Level	5
Table 3A: Lincoln University Number & Percentage Distribution of Full-Time Equivalent Students	6
Table 3B: Pennsylvania State University Number & Percentage Distribution of Full-Time Equivalent Students	7
Table 3C: University of Pittsburgh Number & Percentage Distribution of Full-Time Equivalent Students	8
Table 3D: Temple University Number & Percentage Distribution of Full-Time Equivalent Students	9
Table 4: Degrees Conferred	10
Table 5: Number and Workweeks of Full-Time Employed Faculty by Type of Activity	11
Table 6: Number and Average Instructional Salaries of Full-Time Equivalent Instructional Faculty and Percentage Distribution by Rank	12
Table 7: Average Instructional Faculty Salary Cost Per Full-Time Equivalent Student by Academic Division and Level	13
Table 8A: Lincoln University Average Instructional Faculty Salary Cost Per Full-Time Equivalent Student	14
Table 8B: Pennsylvania State University Average Instructional Faculty Salary Cost Per Full-Time Equivalent Student	15
Table 8C: University of Pittsburgh Average Instructional Faculty Salary Cost Per Full-Time Equivalent Student	16

Table 8D: Temple University Average Instructional Faculty Salary Cost Per Full-Time Equivalent Student	17
Table 9: Average Class Sizes in Classroom Instruction by Academic Division and Level	18
Table 10: Academic Year Tuition and Required Fees for Full-Time Students by Academic Level and Residence	19
Table 11: Tuition and Fee Revenues Related to Full-Time Equivalent Students	20
Table 12: Commonwealth Instructional Appropriations Related to Full-Time Equivalent Students	21
Table 13: Tuition and Fee Revenues, Commonwealth Instructional Appropriations Related to Full-Time Equivalent Students	22
 HISTORICAL DATA TABLES	
Historical Table 1: Full-Time Equivalent Students by Academic Level	24
Historical Table 2: Student Credit Hours by Academic Division and Level	25
Historical Table 3: Degrees Conferred	26
Historical Table 4: Number and Average Weekly Student Contact Hours of Full-Time Employed Faculty by Academic Level	27
Historical Table 5: Number and Average Instructional Salaries of Full-Time Equivalent Instructional Faculty by Rank	28
Historical Table 6: Average Instructional Faculty Salary Cost Per Full-Time Equivalent Student by Academic Division and Level	29
Historical Table 7: Average Instructional Faculty Salary Cost Per Student Credit Hour by Academic Division and Level	30
Historical Table 8: Average Class Sizes in Classroom Instruction by Academic Division and Level	31
Historical Table 9: Commonwealth Instructional Appropriations	32
Historical Table 10: Academic Year Tuition and Required Fees for Full-Time Students	33
 APPENDIX	
Model of FTE Salary Cost Determination	35

STATE-RELATED UNIVERSITIES FTE STUDENT ENROLLMENT CHANGES 2014-2015 TO 2019-2020



CURRENT YEAR DATA TABLES

TABLE 1

**FULL-TIME EQUIVALENT STUDENTS BY ACADEMIC LEVEL¹
2019-20, CHANGE FROM 2018-19 AND FIVE-YEAR AVERAGE ANNUAL RATE OF CHANGE (2014-15 to 2019-20)**

State-related University	Total				Undergraduate				Graduate ²			
	FTE students	One-year change	Percent change		FTE students	One-year change	Percent change		FTE students	One-year change	Percent change	
			One-year	Five-year average			One-year	Five-year average			One-year	Five-year average
Lincoln	2,047	-138	-6%	3%	1,878	-96	-5%	4%	169	-42	-20%	-4%
Penn State	88,127	-400	a	a	77,974	-653	-1	a	10,153	254	3	4
Pittsburgh	32,790	-948	-3	-1	24,442	-910	-4	-1	8,348	-37	a	-2
Temple	36,659	-747	-2	1	29,352	-609	-2	1	7,307	-138	-2	1
Total	159,622	-2,232	-1	a	133,645	-2,268	-2	a	25,977	36	a	1

1. Data for each year represent the summer term preceding the academic year plus the academic year. Full-time equivalent students are calculated by dividing undergraduate student credit hours by 30 and graduate student credit hours by 24.

2. Graduate includes master's level at all universities, first professional and/or doctor's level (excluding medical school) at Penn State, Pittsburgh, and Temple.

a. Rounds to less than 1 percent.

SOURCE: Data provided by the individual universities, 2014 to 2020.

TABLE 2

**FULL-TIME EQUIVALENT STUDENTS BY ACADEMIC DIVISION AND LEVEL¹
2019-20, CHANGE FROM 2018-19 AND FIVE-YEAR AVERAGE ANNUAL RATE OF CHANGE (2014-15 to 2019-20)**

State-related University	Lower Division			Upper Division			Master's			First Professional ² and Doctor's		
	FTE Students	Percent change		FTE Students	Percent change		FTE students	Percent change		FTE students	Percent change	
		One-year	Five-year average		One-year	Five-year average		One-year	Five-year average		One-year	Five-year average
Lincoln	1,347	-9%	5%	531	9%	4%	169	-20%	-4	na	na	na
Penn State	39,831	-3	-1	38,142	2	1	5,507	3	7	4,646	3%	a
Pittsburgh	15,343	-5	-1	9,099	-1	1	5,341	-2	-2	3,008	3	a
Temple	12,829	-2	1	16,523	-2	1	3,658	-8	4	3,649	5	-1%
Total	69,350	-3	-1	64,295	a	1	14,674	-2	2	11,303	3	a

1. Data for each year represent the summer term preceding the academic year plus the academic year. Full-time equivalent students are calculated by dividing undergraduate student credit hours by 30 and graduate student credit hours by 24.

2. Excludes medical school data.

a. Rounds to less than 1 percent.

na. Not applicable.

SOURCE: Data provided by the individual universities, 2014 to 2020.

TABLE 3-A
LINCOLN UNIVERSITY
NUMBER AND PERCENTAGE DISTRIBUTION OF FULL-TIME EQUIVALENT STUDENTS¹
BY ACADEMIC DIVISION AND LEVEL AND CIP CLASSIFICATION
2019-20

CIP Classification	Total	Percent of total	Undergraduate				Graduate	Percent of total
			Lower Division	Percent of total	Upper Division	Percent of total		
Agriculture	-	-	-	-	-	-	-	-
Architecture and Related Services	-	-	-	-	-	-	-	-
Area, Ethnic, Cultural, and Gender Studies	45	2%	38	3%	7	1%	-	-
Business	164	9	39	3	87	16	38	23%
Communications	106	6	40	3	66	12	-	-
Computer and Information Sciences and Support Services	67	4	47	3	21	4	-	-
Personal and Culinary Services	-	-	-	-	-	-	-	-
Education	60	3	2	-	-	a	58	34
Engineering	-	-	-	-	-	-	-	-
Foreign Languages, Literature, and Linguistics	57	3	51	4	7	1	-	-
Health Professions and Related Clinical Sciences	164	9	92	7	72	14	-	-
Family and Consumer Sciences/Human Sciences	-	-	-	-	-	-	-	-
Legal Professions and Studies	-	-	-	-	-	-	-	-
English Language and Literature/Letters	205	11	182	14	23	4	-	-
Liberal Arts and Sciences, General Studies and Humanities	-	-	-	-	-	-	-	-
Library Science	-	-	-	-	-	-	-	-
Biological and Biomedical Sciences	152	8	127	9	25	5	-	-
Mathematics and Statistics	166	9	163	12	2	a	-	-
Military Technologies	-	-	-	-	-	-	-	-
Multi/Interdisciplinary Studies	-	-	-	-	-	-	-	-
Parks, Recreation, Leisure, and Fitness Studies	-	-	-	-	-	-	-	-
Personal and Social Development	-	-	-	-	-	-	-	-
Philosophy and Religion/Theology	94	5	88	7	6	1	-	-
Physical Sciences	101	5	94	7	8	1	-	-
Psychology	96	5	41	3	40	8	15	9
Security and Protective Services/Public Administration and Services	206	11	62	5	90	17	54	32
Social Sciences and History	191	10	124	9	63	12	4	2
Trade and Industrial	-	-	-	-	-	-	-	-
Visual and Performing Arts	143	8	129	10	15	3	-	-
Other	29	2	29	2	-	-	-	-
Total ²	1,878	100	1,347	100	531	100	169	100

1. Data represent the summer term preceding the academic year plus the academic year. Full-time equivalent students are calculated by dividing undergraduate student credit hours by 30 and graduate student credit hours by 24.

2. Because of rounding, CIP detail may not sum to total.

a. Rounds to less than 1 percent.

SOURCE: Data provided by Lincoln University, 2020; CIP classifications as defined in "The Integrated Postsecondary Education Data System (IPEDS) Classification of Instructional Programs (CIP)" <http://nces.ed.gov/ipeds/cipcode/Default.aspx?y=55> U.S. Department of Education, National Center for Education Statistics.

TABLE 3-B
PENNSYLVANIA STATE UNIVERSITY
NUMBER AND PERCENTAGE DISTRIBUTION OF FULL-TIME EQUIVALENT STUDENTS¹
BY ACADEMIC DIVISION AND LEVEL AND CIP CLASSIFICATION
2019-20

CIP Classification	Total	Percent of total	Undergraduate				Graduate	Percent of total
			Lower Division	Percent of total	Upper Division	Percent of total		
Agriculture	1,445	2%	656	2%	655	2%	134	1%
Architecture and Related Services	515	1	189	a	261	1	66	1
Area, Ethnic, Cultural, and Gender Studies	972	1	735	2	184	a	52	1
Business	10,368	12	1,904	5	6,554	17	1,910	19
Communications	4,313	5	2,606	7	1,594	4	112	1
Computer and Information Sciences and Support Services	4,472	5	1,734	4	2,152	6	587	6
Personal and Culinary Services	-	-	-	-	-	-	-	-
Education	2,275	3	188	a	1,162	3	925	9
Engineering	8,522	10	1,920	5	4,899	13	1,704	17
Foreign Languages, Literature, and Linguistics	3,346	4	1,545	4	1,679	4	122	1
Health Professions and Related Clinical Sciences	3,195	4	676	2	1,962	5	557	5
Family and Consumer Sciences/Human Sciences	2,085	2	1,073	3	910	2	102	1
Legal Professions and Studies	910	1	-	-	1	a	909	9
English Language and Literature/Letters	4,108	5	3,279	8	753	2	76	1
Liberal Arts and Sciences, General Studies and Humanities	100	a	35	a	61	a	4	a
Library Science	-	-	-	-	-	-	-	-
Biological and Biomedical Sciences	5,034	6	2,604	7	2,236	6	194	2
Mathematics and Statistics	8,082	9	5,188	13	2,498	7	397	4
Military Technologies	86	a	48	a	38	a	-	-
Multi/Interdisciplinary Studies	949	1	303	1	245	1	400	4
Parks, Recreation, Leisure, and Fitness Studies	2,095	2	479	1	1,553	4	62	1
Personal and Social Development	5	a	-	-	4	a	-	-
Philosophy and Religion/Theology	1,029	1	789	2	213	1	27	a
Physical Sciences	7,002	8	4,668	12	1,790	5	545	5
Psychology	3,388	4	1,606	4	1,430	4	352	3
Security and Protective Services/Public Administration and Services	1,637	2	750	2	652	2	235	2
Social Sciences and History	8,295	9	4,704	12	3,056	8	535	5
Trade and Industrial	6	a	-	-	6	a	-	-
Visual and Performing Arts	3,894	4	2,151	5	1,597	4	147	1
Other	-	-	-	-	-	-	-	-
Total ²	88,130	100	39,832	100	38,145	100	10,153	100

1. Data represent the summer term preceding the academic year plus the academic year. Full-time equivalent students are calculated by dividing undergraduate student credit hours by 30 and graduate student credit hours by 24.

2. Because of rounding, CIP detail may not sum to total.

a. Rounds to less than 1 percent.

SOURCE: Data provided by Penn State University, 2020; CIP classifications as defined in "The Integrated Postsecondary Education Data System (IPEDS) Classification of Instructional Programs (CIP)" <http://nces.ed.gov/ipeds/cipcode/Default.aspx?y=55> U.S. Department of Education, National Center for Education Statistics.

TABLE 3-C
UNIVERSITY OF PITTSBURGH
NUMBER AND PERCENTAGE DISTRIBUTION OF FULL-TIME EQUIVALENT STUDENTS¹
BY ACADEMIC DIVISION AND LEVEL AND CIP CLASSIFICATION
2019-20

CIP Classification	Total	Percent of total	Undergraduate				Graduate	Percent of total
			Lower division	Percent of total	Upper division	Percent of total		
Agriculture	-	-	-	-	-	-	-	-
Architecture and Related Services	-	-	-	-	-	-	-	-
Area, Ethnic, Cultural, and Gender Studies	364	1%	177	1%	182	2%	4	a
Business	2,302	7	435	3	1,203	13	665	8%
Communications	-	-	-	-	-	-	-	-
Computer and Information Sciences and Support Services	1,339	4	525	3	436	5	378	5
Personal and Culinary Services	-	-	-	-	-	-	-	-
Education	1,289	4	290	2	448	5	552	7
Engineering	2,808	9	958	6	1,129	12	720	9
Foreign Languages, Literature, and Linguistics	1,408	4	952	6	365	4	91	1
Health Professions and Related Clinical Sciences	5,005	15	505	3	1,074	12	3,426	41
Family and Consumer Sciences/Human Sciences	-	-	-	-	-	-	-	-
Legal Professions and Studies	560	2	2	a	8	a	550	7
English Language and Literature/Letters	2,498	13	495	5	58	1	72	1
Liberal Arts and Sciences, General Studies and Humanities	-	-	-	-	-	-	-	-
Library Science	85	a	15	a	5	a	65	1
Biological and Biomedical Sciences	1,831	6	954	6	693	8	184	2
Mathematics and Statistics	2,014	6	1,414	9	454	5	146	2
Military Technologies	19	a	9	a	10	a	-	-
Multi/Interdisciplinary Studies	1,134	3	663	4	441	5	29	a
Parks, Recreation, Leisure, and Fitness Studies	-	-	-	-	-	-	-	-
Personal and Social Development	-	-	-	-	-	-	-	-
Philosophy and Religion/Theology	530	2	348	2	156	2	27	a
Physical Sciences	2,748	8	2,180	14	303	3	265	3
Psychology	1,518	5	985	6	353	4	180	2
Security and Protective Services/Public Administration and Services	982	3	72	a	162	2	749	9
Social Sciences and History	3,193	10	2,014	13	1,016	11	163	2
Trade and Industrial	-	-	-	-	-	-	-	-
Visual and Performing Arts	1,161	4	915	6	164	2	82	1
Other	-	-	-	-	-	-	-	-
Total²	32,790	100	15,342	100	9,099	100	8,348	100

1. Data represent the summer term preceding the academic year plus the academic year. Full-time equivalent students are calculated by dividing undergraduate student credit hours by 30 and graduate student credit hours by 24.

2. Because of rounding, CIP detail may not sum to total.

a. Rounds to less than 1 percent.

SOURCE: Data provided by University of Pittsburgh, 2020; CIP classifications as defined in "The Integrated Postsecondary Education Data System (IPEDS) Classification of Instructional Programs (CIP)" <http://nces.ed.gov/ipeds/cipcode/Default.aspx?y=55> U.S. Department of Education, National Center for Education Statistics.

TABLE 3-D
TEMPLE UNIVERSITY
NUMBER AND PERCENTAGE DISTRIBUTION OF FULL-TIME EQUIVALENT STUDENTS¹
BY ACADEMIC DIVISION AND LEVEL AND CIP CLASSIFICATION
2019-20

CIP Classification	Total	Percent of total	Undergraduate				Graduate	Percent of total
			Lower division	Percent of total	Upper division	Percent of total		
Agriculture	-	-	-	-	-	-	-	-
Architecture and Related Services	423	1%	143	1%	209	1%	71	1%
Area, Ethnic, Cultural, and Gender Studies	452	1	193	2	245	1	13	a
Business	6,259	17	1,535	12	3,464	21	1,260	17
Communications	2,626	7	903	7	1,600	10	123	2
Computer and Information Sciences and Support Services	799	2	214	2	530	3	55	1
Personal and Culinary Services	-	-	-	-	-	-	-	-
Education	1,411	4	403	3	554	3	454	6
Engineering	1,321	4	429	3	809	5	83	1
Foreign Languages, Literature, and Linguistics	1,116	3	526	4	575	3	14	a
Health Professions and Related Clinical Sciences	4,013	11	463	4	814	5	2,735	37
Family and Consumer Sciences/Human Sciences	-	-	-	-	-	-	-	-
Legal Professions and Studies	1,352	4	167	1	126	1	1,059	14
English Language and Literature/Letters	1,138	3	800	6	299	2	40	1
Liberal Arts and Sciences, General Studies and Humanities	1,326	4	867	7	449	3	10	a
Library Science	-	-	-	-	-	-	-	-
Biological and Biomedical Sciences	845	2	284	2	473	3	88	1
Mathematics and Statistics	1,354	4	956	7	378	2	19	a
Military Technologies	-	-	-	-	-	-	-	-
Multi/Interdisciplinary Studies	72	a	50	a	21	a	2	a
Parks, Recreation, Leisure, and Fitness Studies	1,478	4	428	3	880	5	170	2
Personal and Social Development	-	-	-	-	-	-	-	-
Philosophy and Religion/Theology	636	2	253	2	359	2	24	a
Physical Sciences	1,553	4	725	6	724	4	104	1
Psychology	1,724	5	642	5	856	5	226	3
Security and Protective Services/Public Administration and Services	963	3	235	2	422	3	306	4
Social Sciences and History	3,110	8	1,548	12	1,421	9	141	2
Trade and Industrial	-	-	-	-	-	-	-	-
Visual and Performing Arts	2,688	7	1,065	8	1,313	8	310	4
Other	-	-	-	-	-	-	-	-
Total²	36,659	100	12,829	100	16,523	100	7,307	100

1. Data represent the summer term preceding the academic year plus the academic year. Full-time equivalent students are calculated by dividing undergraduate student credit hours by 30 and graduate student credit hours by 24.

2. Because of rounding, CIP detail may not sum to total.

a. Rounds to less than 1 percent.

SOURCE: Data provided by Temple University, 2020; CIP classifications as defined in "The Integrated Postsecondary Education Data System (IPEDS) Classification of Instructional Programs (CIP)" <http://nces.ed.gov/ipeds/cipcode/Default.aspx?y=55> U.S. Department of Education, National Center for Education Statistics.

TABLE 4

**DEGREES CONFERRED¹
2019-20, CHANGE FROM 2018-19 AND FIVE-YEAR AVERAGE ANNUAL RATE OF CHANGE (2014-15 TO 2019-20)**

State-related University	Total				Undergraduate				Graduate ²			
	Degrees	One-year change	Percent change		Degrees	One-year change	Percent change		Degrees	One-year change	Percent change	
			One-year	Five-year average			One-year	Five-year average			One-year	Five-year average
Lincoln	454	-9	-2%	5%	350	-8	-2%	7%	104	-1	-1%	2%
Penn State	22,067	1,104	5	3	17,461	952	6	2	4,606	152	3	4
Pittsburgh	8,851	-89	-1	a	5,762	98	2	1	3,089	-187	-6	-2
Temple	10,128	99	1	3	7,095	346	5	3	3,033	-247	-8	4
Total	41,500	1,105	3	2	30,668	1,388	5	2	10,882	-283	-3	2

1. Data for each year represent the summer term preceding the academic year plus the academic year.

2. Graduate includes master's level at all universities, first professional and/or doctor's level (excluding medical school) at Penn State, Pittsburgh Temple.

a. Rounds to less than 1 percent.

SOURCE: Data provided by the individual universities, 2014 to 2020.

TABLE 5

**NUMBER AND WORKWEEKS OF FULL-TIME EMPLOYED FACULTY BY TYPE OF ACTIVITY
FALL 2019, AND PERCENTAGE CHANGE FROM FALL 2018**

State-related University	Full-time employed faculty ¹	Student contact				Average weekly hours ²							
		Undergraduate	Percent change	Graduate	Percent change	Instructional support ³	Percent change	Research	Percent change	Other university service ⁴	Percent change	Total work-week	Percent change
Lincoln	107	8.8	-8%	0.5	7%	15.6	-8%	8.7	a	12.7	1%	46.3	-4%
Penn State	4,439	9.6	a	2.8	-2	13.6	-2	14.7	-3%	8.3	-1	49.1	-2
Pittsburgh	2,170	5.0	-2	2.3	-4	13.9	-1	20.6	a	9.6	-2	51.4	-1
Temple	1,374	5.4	1	2.6	2	15.2	3	11.5	1	8.5	1	43.2	2
Total	8,090	7.7	a	2.6	-3	14.0	-1	15.7	1	8.7	-1	48.7	-1

1. The number of full-time employed faculty represents those reported by each university for the fall term.

2. Averages calculated for the full-time employed faculty who reported complete workweeks of 100 hours or less for the fall term

3. Includes course preparation and evaluation.

4. Includes public service, institutional support, and student services.

a. Rounds to less than 1 percent.

na. Not applicable.

SOURCE: Data provided by the individual universities, 2018 to 2019

TABLE 6

**NUMBER AND AVERAGE INSTRUCTIONAL SALARIES OF FULL-TIME EQUIVALENT INSTRUCTIONAL FACULTY
AND PERCENTAGE DISTRIBUTION BY RANK¹
2019-20
(Dollars in thousands)**

State-related University	FTE Instructional faculty		Average Instructional salary		Professor		Associate professor		Assistant professor		Instructor		No rank ²	
	Number	Percent Change	Amount	Percent Change	Average Instructional Salary	Percent of Faculty Salary	Average Instructional Salary	Percent of Faculty Salary	Average Instructional Salary	Percent of Faculty Salary	Average Instructional Salary	Percent of Faculty Salary	Average Instructional Salary	Percent of Faculty Salary
		2018-19 to 2019-20		2018-19 to 2019-20										
Lincoln	173	-1%	\$51	2%	\$95	28%	\$75	19%	\$64	29%	\$20	16%	\$62	7%
Penn State	5,119	1	86	2	143	27	100	19	87	15	\$64	23	\$63	16
Pittsburgh	2,237	1	72	3	134	28	81	21	70	8	\$39	8	\$61	23
Temple	1,975	a	71	4	124	26	85	26	62	23	\$49	12	\$48	13
Total	9,504	1	79	2	136	28	92	21	70	15	\$57	18	\$60	18

1. Average instructional salaries are calculated by dividing the total instructional salaries paid to all staff members in the respective ranks by their total full-time equivalency in the instructional function. One full-time equivalent faculty represents workload for two terms (one academic year). The summer term is treated as one term or one-half of the academic year. Data for each year represent the summer term preceding the academic year plus the academic year.

2. The full-time equivalency of non-ranked faculty members is based on the time spent in instruction by all non-ranked personnel, including lecturers, administrators, librarians, research staff, graduate assistants, and volunteers.

a. Rounds to less than 1 percent.

na. Not applicable.

SOURCE: Data provided by the individual universities, 2019 to 2020.

TABLE 7

**AVERAGE INSTRUCTIONAL FACULTY SALARY COST PER FULL-TIME EQUIVALENT STUDENT BY ACADEMIC DIVISION AND LEVEL¹
2019-20, CHANGE FROM 2018-19 AND FIVE-YEAR AVERAGE ANNUAL RATE OF CHANGE (2014-15 to 2019-20)**

State-related University	Undergraduate							Master's				
	Lower Division	Percent change		Upper Division	Percent change		Total undergraduate	Percent change		Total master's	Percent change	
		One-year	Five-year average		One-year	Five-year average		One-year	Five-year average		One-year	Five-year average
Lincoln	\$3,680	16%	2%	\$5,344	-14%	7%	\$4,150	5%	3%	\$6,368	31%	13%
Penn State	4,378	7	3	5,036	3	3	4,700	5	3	6,872	2	1
Pittsburgh	3,307	3	3	5,433	8	3	4,099	5	4	6,073	8	4
Temple	2,991	4	6	3,982	5	6	3,549	5	6	5,566	12	4
Total	3,821	5	3	4,782	4	3	4,283	5	4	6,528	7	2

1. The average instructional faculty salary cost per full-time equivalent student for each level is calculated as follows: the instructional salary for each rank is assigned by level according to the percentage distribution of the course (assigned) credits within each rank. The salary for each rank is summed by level and divided by total full-time equivalent students for that level.

a. Rounds to less than 1 percent.

SOURCE: Data provided by the individual universities, 2014 to 2020.

TABLE 8A
LINCOLN UNIVERSITY
AVERAGE INSTRUCTIONAL FACULTY SALARY COST PER FULL-TIME EQUIVALENT STUDENT¹
BY ACADEMIC DIVISION AND LEVEL AND CIP CLASSIFICATION
2019-20

CIP Classification	Undergraduate			Graduate		
	Lower division	Upper division	Total undergraduate	Master's	First professional	Doctor's
Agriculture	-	-	-	-	-	-
Architecture and Related Services	-	-	-	-	-	-
Area, Ethnic, Cultural, and Gender Studies	\$1,927	\$4,570	\$2,362	-	-	-
Business	3,471	5,369	4,783	\$6,355	-	-
Communications	3,483	3,648	3,585	-	-	-
Computer and Information Sciences and Support Services	4,044	4,818	4,279	-	-	-
Personal and Culinary Services	-	-	-	-	-	-
Education	6,449	-	6,449	6,240	-	-
Engineering	-	-	-	-	-	-
Foreign Languages, Literature, and Linguistics	3,194	6,794	3,615	-	-	-
Health Professions and Related Clinical Sciences	5,017	8,284	6,456	-	-	-
Family and Consumer Sciences/Human Sciences	-	-	-	-	-	-
Legal Professions and Studies	-	-	-	-	-	-
English Language and Literature/Letters	2,920	4,170	3,060	-	-	-
Liberal Arts and Sciences, General Studies and Humanities	-	-	-	-	-	-
Library Science	-	-	-	-	-	-
Biological and Biomedical Sciences	3,536	7,285	4,153	-	-	-
Mathematics and Statistics	4,010	15,300	4,154	-	-	-
Military Technologies	-	-	-	-	-	-
Multi/Interdisciplinary Studies	-	-	-	-	-	-
Parks, Recreation, Leisure, and Fitness Studies	-	-	-	-	-	-
Personal and Social Development	-	-	-	-	-	-
Philosophy and Religion/Theology	2,725	11,917	3,264	-	-	-
Physical Sciences	6,839	22,583	8,040	-	-	-
Psychology	3,659	3,667	3,663	5,160	-	-
Security and Protective Services/Public Administration and Services	2,732	3,750	3,333	3,368	-	-
Social Sciences and History	3,854	5,348	4,359	3,562	-	-
Trade and Industrial	-	-	-	-	-	-
Visual and Performing Arts	3,798	8,151	4,242	-	-	-
Other	1,204	-	1,384	-	-	-
Total	3,680	5,344	4,150	6,368	-	-

1. The average instructional faculty salary cost per full-time equivalent student for each level is calculated as follows: the instructional salary for each rank is assigned by level according to the percentage distribution of the course (assigned) credits within each rank. The salary for each rank is summed by level and divided by total full-time equivalent students for that level.

SOURCE: Data provided by Lincoln University, 2020; CIP classifications as defined in "The Integrated Postsecondary Education Data System (IPEDS) Classification of Instructional Programs (CIP)" <http://nces.ed.gov/ipeds/cipcode/Default.aspx?y=55> U.S. Department of Education, National Center for Education Statistics.

TABLE 8B
PENNSYLVANIA STATE UNIVERSITY
AVERAGE INSTRUCTIONAL FACULTY SALARY COST PER FULL-TIME EQUIVALENT STUDENT¹
BY ACADEMIC DIVISION AND LEVEL AND CIP CLASSIFICATION
2019-20

CIP Classification	Undergraduate			Graduate		
	Lower division	Upper division	Total undergraduate	Master's	First professional ²	Doctor's
Agriculture	\$3,792	\$5,165	\$4,478	\$13,160	-	\$6,343
Architecture and Related Services	6,016	7,376	6,805	14,451	-	6,121
Area, Ethnic, Cultural, and Gender Studies	4,276	10,537	5,531	10,885	-	8,811
Business	4,133	5,640	5,301	5,846	-	11,605
Communications	3,938	5,088	4,375	8,791	-	4,455
Computer and Information Sciences and Support Services	4,166	4,808	4,522	5,376	-	1,855
Personal and Culinary Services	-	-	-	-	-	-
Education	9,852	7,926	8,195	7,210	-	9,981
Engineering	7,088	6,548	6,700	10,094	-	6,976
Foreign Languages, Literature, and Linguistics	4,415	4,771	4,600	6,398	-	4,842
Health Professions and Related Clinical Sciences	4,316	4,540	4,483	10,885	-	11,336
Family and Consumer Sciences/Human Sciences	2,830	5,127	3,884	12,283	-	8,465
Legal Professions and Studies	28,234	4,235	5,909	8,484	\$9,919	6,742
English Language and Literature/Letters	4,220	5,899	4,534	7,427	-	2,934
Liberal Arts and Sciences, General Studies and Humanities	8,143	9,247	8,842	26,294	-	-
Library Science	99,240	-	-	-	-	-
Biological and Biomedical Sciences	3,487	3,939	3,696	13,862	-	7,467
Mathematics and Statistics	3,353	3,568	3,423	3,077	-	4,488
Military Technologies	-	-	-	-	-	-
Multi/Interdisciplinary Studies	7,847	10,013	8,815	8,367	-	16,589
Parks, Recreation, Leisure, and Fitness Studies	4,074	4,374	4,303	10,078	-	8,011
Personal and Social Development	61,997	25,385	28,784	-	-	-
Philosophy and Religion/Theology	4,620	5,818	4,875	26,079	-	3,292
Physical Sciences	4,484	3,247	4,141	16,939	-	7,318
Psychology	3,224	5,558	4,323	7,401	-	7,869
Security and Protective Services/Public Administration and Services	4,057	4,374	4,204	5,330	-	6,280
Social Sciences and History	3,509	5,147	4,154	10,041	-	8,621
Trade and Industrial	-	24,337	24,337	-	-	-
Visual and Performing Arts	3,595	5,159	4,261	16,177	-	5,843
Other	-	-	-	-	-	-
Total	4,378	5,036	4,700	6,872	9,921	6,832

1. The average instructional faculty salary cost per full-time equivalent student for each level is calculated as follows: the instructional salary for each rank is assigned by level according to the percentage distribution of the course (assigned) credits within each rank. The salary for each rank is summed by level and divided by total full-time equivalent students for that level.

2. Excludes Medical School Data.

SOURCE: Data provided by Pennsylvania State University, 2020; CIP classifications as defined in "The Integrated Postsecondary Education Data System (IPEDS) Classification of Instructional Programs (CIP) " <http://nces.ed.gov/ipeds/cipcode/Default.aspx?y=55> U.S. Department of Education, National Center for Education Statistics.

TABLE 8C
UNIVERSITY OF PITTSBURGH
AVERAGE INSTRUCTIONAL FACULTY SALARY COST PER FULL-TIME EQUIVALENT STUDENT¹
BY ACADEMIC DIVISION AND LEVEL AND CIP CLASSIFICATION
2019-20

CIP Classification	Undergraduate			Graduate		
	Lower division	Upper division	Total undergraduate	Master's	First professional ²	Doctor's
Agriculture	-	-	-	-	-	-
Architecture and Related Services	-	-	-	-	-	-
Area, Ethnic, Cultural, and Gender Studies	\$1,219	\$3,209	\$2,229	\$1,933	-	-
Business	3,880	5,306	4,927	5,066	\$27,906	\$31,063
Communications	-	-	-	-	-	-
Computer and Information Sciences and Support Services	2,646	4,025	3,272	6,653	8,937	39,019
Personal and Culinary Services	-	-	-	-	-	-
Education	3,660	6,242	5,228	3,796	-	11,949
Engineering	2,489	3,766	3,180	7,784	-	33,740
Foreign Languages, Literature, and Linguistics	4,716	5,439	4,917	7,961	-	37,820
Health Professions and Related Clinical Sciences	3,761	5,552	4,979	6,416	2,197	16,699
Family and Consumer Sciences/Human Sciences	-	-	-	-	-	-
Legal Professions and Studies	9,853	6,441	7,239	15,265	4,834	-
English Language and Literature/Letters	3,459	5,951	3,968	7,082	-	10,383
Liberal Arts and Sciences, General Studies and Humanities	-	-	-	-	-	-
Library Science	4,423	6,539	4,981	11,115	-	57,274
Biological and Biomedical Sciences	2,787	5,432	3,900	5,451	-	14,772
Mathematics and Statistics	3,056	3,667	3,204	7,475	-	13,035
Military Technologies	-	-	-	-	-	-
Multi/Interdisciplinary Studies	4,876	5,142	4,982	5,359	-	5,026
Parks, Recreation, Leisure, and Fitness Studies	-	-	-	-	-	-
Personal and Social Development	-	-	-	-	-	-
Philosophy and Religion/Theology	3,223	5,452	3,912	15,609	-	92,209
Physical Sciences	3,073	9,101	3,808	6,178	-	17,355
Psychology	1,613	5,913	2,748	7,413	13,523	17,752
Security and Protective Services/Public Administration and Services	4,336	6,519	5,847	5,580	11,654	21,742
Social Sciences and History	2,509	5,718	3,585	15,250	-	31,723
Trade and Industrial	-	-	-	-	-	-
Visual and Performing Arts	3,473	7,922	4,149	11,276	-	25,984
Other	-	-	-	-	-	-
Total	3,307	5,433	4,099	6,073	2,467	21,525

1. The average instructional faculty salary cost per full-time equivalent student for each level is calculated as follows: the instructional salary for each rank is assigned by level according to the percentage distribution of the course (assigned) credits within each rank. The salary for each rank is summed by level and divided by total full-time equivalent students for that level.

2. Excludes Medical School Data

SOURCE: Data provided by University of Pittsburgh, 2020; CIP classifications as defined in "The Integrated Postsecondary Education Data System (IPEDS) Classification of Instructional Programs (CIP) "
<http://nces.ed.gov/ipeds/cipcode/Default.aspx?y=55> U.S. Department of Education, National Center for Education Statistics.

TABLE 8D
TEMPLE UNIVERSITY
AVERAGE INSTRUCTIONAL FACULTY SALARY COST PER FULL-TIME EQUIVALENT STUDENT¹
BY ACADEMIC DIVISION AND LEVEL AND CIP CLASSIFICATION
2019-20

CIP Classification	Undergraduate			Graduate		
	Lower division	Upper division	Total undergraduate	Master's	First professional ²	Doctor's
Agriculture	-	-	-	-	-	-
Architecture and Related Services	\$3,337	\$4,629	\$4,105	\$8,477	-	\$15,431
Area, Ethnic, Cultural, and Gender Studies	1,724	2,301	2,047	6,937	-	6,746
Business	2,634	4,254	3,756	4,852	\$2,431	10,653
Communications	2,646	4,231	3,659	8,966	1,366	13,461
Computer and Information Sciences and Support Services	3,582	5,178	4,719	15,897	-	27,810
Personal and Culinary Services	-	-	-	-	-	-
Education	3,669	4,786	4,316	5,842	-	8,616
Engineering	3,535	4,203	3,972	17,888	-	25,449
Foreign Languages, Literature, and Linguistics	2,517	2,996	2,767	2,801	-	4,291
Health Professions and Related Clinical Sciences	2,473	4,131	3,530	7,360	\$1,061	5,636
Family and Consumer Sciences/Human Sciences	-	-	-	-	-	-
Legal Professions and Studies	3,490	4,760	4,037	5,044	8,430	-
English Language and Literature/Letters	2,682	2,736	2,696	4,463	-	4,687
Liberal Arts and Sciences, General Studies and Humanities	2,111	2,424	2,218	5,302	-	-
Library Science	-	-	-	-	-	-
Biological and Biomedical Sciences	2,126	3,958	3,271	7,862	-	25,541
Mathematics and Statistics	2,124	2,764	2,306	14,072	-	17,203
Military Technologies	-	-	-	-	-	-
Multi/Interdisciplinary Studies	5,630	9,534	6,771	12,067	-	4,827
Parks, Recreation, Leisure, and Fitness Studies	1,539	3,432	2,813	6,695	-	7,310
Personal and Social Development	-	-	-	-	-	-
Philosophy and Religion/Theology	3,065	3,522	3,333	7,348	-	14,429
Physical Sciences	2,141	2,926	2,533	6,228	-	21,196
Psychology	2,105	4,313	3,366	5,853	838	14,242
Security and Protective Services/Public Administration and Services	2,407	3,631	3,193	4,308	-	7,610
Social Sciences and History	2,025	3,202	2,589	4,656	-	7,898
Trade and Industrial	-	-	-	-	-	-
Visual and Performing Arts	3,619	4,723	4,229	8,585	-	13,633
Other	-	-	-	-	-	-
Total	2,991	3,982	3,549	5,566	2,370	9,199

1. The average instructional faculty salary cost per full-time equivalent student for each level is calculated as follows: the instructional salary for each rank is assigned by level according to the percentage distribution of the course (assigned) credits within each rank. The salary for each rank is summed by level and divided by total full-time equivalent students for that level.

2. Excludes Medical School Data.

SOURCE: Data provided by Temple University, 2020; CIP classifications as defined in "The Integrated Postsecondary Education Data System (IPEDS) Classification of Instructional Programs (CIP) "
<http://nces.ed.gov/ipeds/cipcode/Default.aspx?y=55> U.S. Department of Education, National Center for Education Statistics.

TABLE 9

**AVERAGE CLASS SIZES IN CLASSROOM INSTRUCTION BY ACADEMIC DIVISION AND LEVEL¹
2019-20, CHANGE FROM 2018-19 AND FIVE-YEAR AVERAGE ANNUAL RATE OF CHANGE (2014-15 to 2019-20)**

State-related University	Undergraduate									Master's		
	Lower division			Upper division			Total undergraduate					
	Class size	Percent change		Class size	Percent change		Class size	Percent change		Class size	Percent change	
	One-year	Five-year average	One-year	One-year	Five-year average	One-year	One-year	Five-year average	One-year	One-year	Five-year average	
Lincoln	19	-8%	5%	14	23%	1%	17	a	3%	9	-23%	-6%
Penn State	27	-1	-3	23	2	-3	25	a	-4	14	4	-2
Pittsburgh	28	1	-1	23	-2	-1	26	a	a	16	-4	-1
Temple	32	a	a	26	a	a	29	a	a	17	-1	4
Average	28	-1	-2	24	2	-2	26	a	-2	15	-2	a

1. Average class size for each level is calculated by dividing total classroom student credit hours by total classroom course (assigned) credits.

a. Rounds to less than 1 percent.

SOURCE: Data provided by the individual universities, 2014 to 2020.

TABLE 10

**ACADEMIC YEAR TUITION AND REQUIRED FEES FOR FULL-TIME STUDENTS BY ACADEMIC LEVEL AND RESIDENCE
2018-19, CHANGE FROM 2017-18 AND FIVE-YEAR AVERAGE ANNUAL RATE OF CHANGE (2013-14 to 2018-19)**

State-related University	Undergraduate						Graduate ¹					
	In-State			Out-of-State			In-State			Out-of-State		
	Tuition and required fees	Percent change		Tuition and required fees	Percent change		Tuition and required fees	Percent change		Tuition and required fees	Percentage change	
One-year		Five-year average	One-year		Five-year average	One-year		Five-year average	One-year		Five-year average	
Lincoln	\$11,266	2%	2%	\$17,468	3%	2%	\$11,420	a	a	\$18,950	a	a
Penn State ²	18,450	a	1	35,514	2	3	22,994	2%	3%	38,728	2%	3%
Pittsburgh ²	19,718	3	2	33,746	5	4	24,480	3	3	40,848	3	3
Temple	16,970	a	3	29,882	3	4	17,846	3	3	24,236	3	3
Average	16,601	1	2	29,153	3	3	19,185	2	2	30,691	2	3

1. Excludes first-professional level.

2. Main campus data only.

na. Not applicable.

a. Rounds to less than 1 percent.

SOURCE: Pennsylvania Department of Education, National Center for Education Statistics.

TABLE 11

**TUITION AND FEE REVENUES RELATED TO FULL-TIME EQUIVALENT STUDENTS¹
2019-20, CHANGE FROM 2018-19 AND FIVE-YEAR AVERAGE ANNUAL RATE OF CHANGE (2014-15 to 2019-20)**

State-related University	Total tuition and fee revenues			Tuition and fee revenues per FTE student			
	Amount (000s)	Percent change		Amount	One-Year change	Percent change	
		One-year	Five-year average			One-year	Five-year average
Lincoln	\$29,044	-5%	5%	\$14,190	\$220	2%	1%
Penn State	2,026,247	9	4	22,992	1948	9	3
Pittsburgh	821,410	3	3	25,051	1,454	6	4
Temple	991,610	-1	5	27,050	381	1	4
Total	3,868,311	5	4	24,234	1,454	6	3

1. Tuition and fee revenues are based on collections by the individual universities. FTE students include in-State and out-of-State undergraduate and graduate students. Excludes medical school data.

a. Rounds to less than 1 percent.

SOURCE: Tuition and fee revenues and FTE Students data provided by the individual State-related universities 2014 to 2020.

TABLE 12

**COMMONWEALTH INSTRUCTIONAL APPROPRIATIONS RELATED TO FULL-TIME EQUIVALENT STUDENTS¹
2019-20, CHANGE FROM 2018-19 AND FIVE-YEAR AVERAGE ANNUAL RATE OF CHANGE (2014-15 TO 2019-20)**

State-related University	Total instructional appropriations			Instructional appropriations per FTE student			
	Amount (000s)	Percent change		Amount	One-year change	Percent change	
		One-year	Five-year average			One-year	Five-year average
Lincoln	\$15,166	2%	3%	\$7,410	604	9%	a
Penn State	242,096	2	1	2,747	66	2	1%
Pittsburgh	165,542	5	3	5,049	377	8	4
Temple	158,206	2	2	4,316	169	4	1
Total	581,010	3	4	3,640	149	4	4

1. Instructional appropriations include educational and general appropriations. FTE students include in-State and out-of-State undergraduate and graduate students. Excludes medical school data.

a. Rounds to less than 1 percent.

SOURCE: Instructional appropriations - Governor's Executive Budget, 2014-15 to 2019-20; data provided by the individual State-related universities. FTE students-data provided by the individual universities 2014 to 2020.

TABLE 13

**TUITION AND FEE REVENUES, COMMONWEALTH INSTRUCTIONAL APPROPRIATIONS
AND STUDENT AID RELATED TO FULL-TIME EQUIVALENT STUDENTS¹ 2019-20,
CHANGE FROM 2018-19 AND FIVE-YEAR AVERAGE ANNUAL RATE OF CHANGE (2014-15 to 2019-20)**

State-related University	Per FTE student			Ratio of instructional appropriations to total instructional revenues		
	Tuition and Fee Revenues	Instructional Appropriations	Total Instructional Revenues	Percent	Percentage change	
					One-year	Five-year average
Lincoln	\$14,190	\$7,410	\$21,600	34%	5%	-1%
Penn State	22,992	2,747	25,740	11	-6	-1
Pittsburgh	25,051	5,049	30,099	17	1	1
Temple	27,050	4,316	31,365	14	2	1
Average	24,234	3,640	27,874	13	-2	1

1. Tuition and fee revenues are based on collections by the individual universities. Instructional appropriations include educational and general appropriations. FTE students include in-State and out-of-State undergraduate and graduate students. Excludes medical schools.

a. Rounds to less than 1 percent.

SOURCE: Tuition and fee revenues - State-related data provided by the individual universities.

NOTE: Student Aid Per FTE has been omitted from the report due to misrepresentation of financial aid disbursement per FTE.

HISTORICAL DATA TABLES

HISTORICAL TABLE 1

**FULL-TIME EQUIVALENT STUDENTS BY ACADEMIC LEVEL¹
2014-15 to 2019-20**

State-related University	2014-15	2015-16	2016-17	2017-18	2018-19	2019-20
Lincoln						
Total	1,753	1,792	1,904	2,141	2,185	2,047
Undergraduate	1,536	1,602	1,693	1,912	1,973	1,878
Graduate	217	190	212	230	212	169
Penn State						
Total	86,760	87,856	90,717	90,283	88,526	88,127
Undergraduate	78,267	79,183	81,586	80,683	78,627	77,974
Graduate	8,493	8,673	9,131	9,600	9,899	10,153
Pittsburgh						
Total	34,264	33,988	33,840	33,617	33,737	32,790
Undergraduate	25,235	25,221	25,444	25,377	25,352	24,442
Graduate	9,029	8,767	8,396	8,240	8,385	8,348
Temple						
Total	34,639	35,066	37,236	37,374	37,406	36,659
Undergraduate	27,726	28,296	29,574	30,066	29,961	29,352
Graduate	6,914	6,770	7,662	7,308	7,445	7,307

1. Data for each year represent the summer term preceding the academic year plus the academic year. Full-time equivalent students are calculated by dividing undergraduate student credit hours by 30 and graduate student credit hours by 24. In addition to master's level, graduate for Penn State, Pittsburgh, and Temple includes first-professional (excluding medical schools) and/or doctor's levels.

SOURCE: Data provided by the individual universities, 2014 to 2020.

HISTORICAL TABLE 2
STUDENT CREDIT HOURS BY ACADEMIC DIVISION AND LEVEL¹
TOTAL YEAR AND SUMMER
(in thousands)
2014-15 to 2019-20

State-related University	Total Year									Summer		
	Lower division	Upper division	Total under- graduate	Master's	First professional	Doctor's	Total graduate	Grand total	Total under- graduate	Total graduate	Grand total	
Lincoln												
2014-15	33	13	46	5	na	na	5	51	a	a	a	
2015-16	36	12	48	5	na	na	5	53	a	a	1	
2016-17	39	12	51	5	na	na	5	56	a	a	1	
2017-18	44	13	57	6	na	na	6	63	a	1	1	
2018-19	45	15	59	5	na	na	5	64	a	1	1	
2019-20	40	16	56	4	na	na	4	60	a	1	1	
Penn State												
2014-15	1,257	1,091	2,348	94	16	94	204	2,552	145	20	165	
2015-16	1,240	1,136	2,376	98	17	93	208	2,584	153	20	173	
2016-17	1,285	1,163	2,448	116	18	85	219	2,667	153	22	175	
2017-18	1,273	1,147	2,420	124	18	89	230	2,651	164	28	192	
2018-19	1,232	1,127	2,359	129	19	90	238	2,596	165	29	194	
2019-20	1,195	1,144	2,339	132	18	93	244	2,583	159	32	191	
Pittsburgh												
2014-15	492	265	757	143	52	22	217	974	39	29	68	
2015-16	494	262	756	139	49	22	210	966	38	28	66	
2016-17	494	269	763	135	45	21	202	965	38	27	65	
2017-18	488	274	761	128	47	23	198	959	38	27	65	
2018-19	484	276	761	131	47	23	201	962	38	26	65	
2019-20	460	273	733	128	47	26	200	934	39	26	65	
Temple												
2014-15	370	462	832	72	70	24	166	998	45	22	67	
2015-16	383	466	849	79	59	24	162	1,011	48	23	71	
2016-17	408	479	887	91	68	25	184	1,071	46	23	69	
2017-18	408	493	902	87	56	23	175	1,077	40	21	61	
2018-19	392	507	899	95	60	23	179	1,078	42	26	68	
2019-20	385	496	881	88	63	25	175	1,056	40	26	66	

1. Data for each year represent the summer term preceding the academic year plus the academic year. The first-professional levels exclude medical school data.

a. Rounds to less than one thousand student credit hours. na. Not applicable.

SOURCE: Data provided by the individual universities, 2014 to 2020.

HISTORICAL TABLE 3**DEGREES CONFERRED¹
2014-15 TO 2019-20**

State-related University	2014-15	2015-16	2016-17	2017-18	2018-19	2019-20
Lincoln						
Total	362	383	405	384	463	454
Bachelor's	263	286	279	259	358	350
Graduate	99	97	126	125	105	104
Penn State						
Total	19,485	19,900	20,576	21,446	20,963	22,067
Bachelor's	15,616	15,934	16,299	17,089	16,509	17,461
Graduate	3,869	3,966	4,277	4,357	4,454	4,606
Pittsburgh						
Total	9,033	8,972	9,157	9,048	8,940	8,851
Bachelor's	5,530	5,411	5,533	5,655	5,664	5,762
Graduate	3,503	3,561	3,624	3,393	3,276	3,089
Temple						
Total	8,642	8,760	9,103	9,718	10,029	10,128
Bachelor's	6,152	6,277	6,456	6,472	6,749	7,095
Graduate	2,490	2,483	2,647	3,246	3,280	3,033

1. Data for each year represent the summer term preceding the academic year plus the academic year. Graduate include master's at all universities, an first professional (excluding medical schools) and doctor's at Penn State, Pittsburgh and Temple.

Source: Data provided by the individual universities, 2014 to 2020.

HISTORICAL TABLE 4

**NUMBER AND AVERAGE WEEKLY STUDENT CONTACT HOURS OF
FULL-TIME EMPLOYED FACULTY BY ACADEMIC LEVEL¹
FALL 2014 to FALL 2019**

State related University	Full-time employee						Undergraduate Average weekly student contact hours						Graduate Average weekly student contact hours					
	2014	2015	2016	2017	2018	2019	2014	2015	2016	2017	2018	2019	2014	2015	2016	2017	2018	2019
Lincoln	82	98	96	100	101	105	9.0	10.2	10.6	11.3	9.6	8.8	1.4	1.3	1.0	0.5	0.5	0.5
Penn State	4,030	4,119	4,276	4,246	4,377	4,439	10.1	9.8	9.6	9.7	9.6	9.6	2.8	2.8	2.8	2.8	2.9	2.8
Pittsburgh	2,051	2,005	2,068	2,084	2,095	2,170	4.9	5.1	4.8	5.2	5.1	5.0	2.6	2.6	2.4	2.4	2.4	2.3
Temple	1,327	1,342	1,478	1,401	1,349	1,374	5.2	5.1	5.2	5.3	5.4	5.4	2.6	2.6	2.5	2.5	2.5	2.6
Total	7,490	7,564	7,918	7,831	7,922	8090	7.7	7.7	7.6	7.7	7.7	7.7	2.7	2.7	2.6	2.6	2.7	2.6

1. Averages calculated for the full-time employed faculty who reported complete workweeks of 100 hours or less for the fall term.

2. The number of full-time employed faculty represents those reported by each university for the fall term.

HISTORICAL TABLE 5
NUMBER AND AVERAGE INSTRUCTIONAL SALARIES OF FULL-TIME EQUIVALENT INSTRUCTIONAL FACULTY BY RANK¹ 2019-20, CHANGE FROM 2018-19 AND FIVE-YEAR AVERAGE ANNUAL RATE OF CHANGE (2014-15 to 2019-20)
(in thousands)

State-related University	FTE Instructional Faculty	All Faculty	Professor	Associate Professor	Assistant Professor	Instructor	No Rank ²
Lincoln							
2014-15	\$112	\$57	\$69	\$63	\$56	\$20	\$49
2015-16	153	53	89	65	54	21	51
2016-17	155	48	87	69	59	20	53
2017-18	164	51	93	69	65	21	59
2018-19	175	50	97	75	66	19	58
2019-20	173	51	95	75	64	20	62
Penn State							
2014-15	4,907	76	127	88	74	53	56
2015-16	4,974	78	130	91	77	56	58
2016-17	4,977	80	133	92	78	56	60
2017-18	4,906	83	136	96	81	60	65
2018-19	5,048	84	139	99	84	61	66
2019-20	5,119	86	142	100	87	64	63
Pittsburgh							
2014-15	2,122	66	119	76	62	33	53
2015-16	2,188	65	119	78	63	33	53
2016-17	2,193	69	122	78	64	35	58
2017-18	2,213	66	129	78	66	36	51
2018-19	2,225	73	131	80	68	38	60
2019-20	2,237	72	134	81	70	39	61
Temple							
2014-15	1,857	60	129	81	45	32	28
2015-16	1,876	53	121	76	38	27	18
2016-17	1,920	47	121	70	29	22	13
2017-18	1,929	68	122	84	61	42	47
2018-19	1,970	68	122	84	61	44	40
2019-20	1,975	71	124	85	62	47	48

1. Average instructional salaries are calculated by dividing the total instructional salaries paid to all staff members in the respective ranks by their total full-time equivalency in the instructional function. One full-time equivalent faculty represents one full-time workload for two terms (one academic year). The summer term is treated as one term or one-half of the academic year. Data for each year represent the summer term preceding the academic year plus the academic year.
2. The full-time equivalency of nonranked faculty members is based on the time spent in instruction by all nonranked personnel, including lecturers, administrators, librarians, research staff, graduate assistants, and volunteers.
na. Not applicable

SOURCE: Data provided by the individual universities, 2014 to 2020.

HISTORICAL TABLE 6

**AVERAGE INSTRUCTIONAL FACULTY SALARY COST PER FULL-TIME EQUIVALENT STUDENT BY ACADEMIC DIVISION AND LEVEL¹
2014-15 to 2019-20**

State-related University	Lower Division						Upper Division						Total Undergrade						Master's					
	2014-15	2015-16	2016-17	2017-18	2018-19	2019-20	2014-15	2015-16	2016-17	2017-18	2018-19	2019-20	2014-15	2015-16	2016-17	2017-18	2018-19	2019-20	2014-15	2015-16	2016-17	2017-18	2018-19	2019-20
Lincoln	\$3,360	\$3,743	\$3,242	\$3,193	\$3,185	\$3,680	\$4,131	\$6,508	\$6,035	\$6,224	\$6,242	\$5,344	\$3,582	\$4,434	\$3,908	\$3,877	\$3,943	\$4,150	\$4,266	\$5,091	\$4,042	\$4,227	\$4,864	\$6,368
Penn State	3,796	3,952	3,756	3,811	4,099	4,378	4,325	4,395	4,530	4,669	4,892	5,036	4,042	4,163	4,124	4,217	4,478	4,700	6,510	6,591	6,412	6,246	6,750	6,872
Pittsburgh	2,812	2,869	2,945	3,093	3,224	3,307	4,636	4,704	4,745	4,935	5,054	5,433	3,451	3,505	3,580	3,755	3,888	4,099	5,103	5,226	5,215	5,608	5,625	6,073
Temple	2,438	2,131	2,131	2,735	2,877	2,991	3,278	2,889	1,849	3,640	3,779	3,982	2,905	2,547	2,523	3,230	3,386	3,549	5,211	4,228	3,522	4,859	4,977	5,566
Total	3,239	3,257	3,130	3,408	3,623	3,821	4,049	4,026	4,032	4,407	4,585	4,782	3,611	3,615	3,548	3,873	4,077	4,283	6,054	5,969	5,535	5,841	6,090	6,528

1. The average instructional faculty salary cost per full-time equivalent student for each level is calculated as follows: the instructional salary for each rank is assigned by level according to the percentage distribution of the course (assigned) credits within each rank. The salary for each rank is summed by level and divided by total full-time equivalent students for that level.

SOURCE: Data provided by the individual universities, 2014 to 2020

HISTORICAL TABLE 7

**AVERAGE INSTRUCTIONAL FACULTY SALARY COST PER STUDENT CREDIT HOUR BY ACADEMIC DIVISION AND LEVEL¹
2014-15 to 2019-20**

State-related university	Lower Division						Upper Division						Total Undergraduate						Master's					
	2014-15	2015-16	2016-17	2017-18	2018-19	2019-20	2014-15	2015-16	2016-17	2017-18	2018-19	2019-20	2014-15	2015-16	2016-17	2017-18	2018-19	2019-20	2014-15	2015-16	2016-17	2017-18	2018-19	2019-20
Lincoln	\$112	\$125	\$108	\$106	\$106	\$123	\$138	\$217	\$201	\$207	\$208	\$178	\$119	\$148	\$130	\$129	\$131	\$138	\$178	\$212	\$168	\$176	\$203	\$265
Penn State	127	132	125	127	137	146	144	146	151	156	163	168	135	139	137	141	149	157	271	275	267	260	281	286
Pittsburgh	94	96	98	103	107	110	155	157	158	165	168	181	115	117	119	125	130	137	213	218	217	234	234	253
Temple	81	71	62	91	96	100	109	96	84	121	126	133	97	85	74	108	113	118	217	167	147	249	236	232
Total	111	109	104	114	121	127	137	134	134	147	153	159	123	121	118	129	136	143	230	249	231	243	254	272

1. The average instructional faculty salary cost per student credit hour for each level is calculated as follows: the instructional salary for each rank is assigned by level according to the percentage distribution of the course (assigned) credits within each rank. The salary for each rank is summed by level and divided by the total student credit-hour production for that level. Instructional faculty salary cost per student credit hour equals instructional faculty salary cost per FTE student divided by 30 for undergraduate students and divided by 24 for graduate students (see Historical Table 6).

SOURCE: Data provided by the individual universities, 2014 to 2020.

HISTORICAL TABLE 8

**AVERAGE CLASS SIZES IN CLASSROOM INSTRUCTION BY ACADEMIC DIVISION AND LEVEL¹
2014-15 to 2019-20**

State-related university	Lower Division						Upper Division						Total Undergraduate						Master's					
	2014-15	2015-16	2016-17	2017-18	2018-19	2019-20	2014-15	2015-16	2016-17	2017-18	2018-19	2019-20	2014-15	2015-16	2016-17	2017-18	2018-19	2019-20	2014-15	2015-16	2016-17	2017-18	2018-19	2019-20
Lincoln	15	19	19	21	20	19	14	14	13	13	12	14	15	17	17	19	17	17	12	12	13	13	11	9
Penn State	32	32	30	29	28	27	27	28	24	23	22	23	30	30	27	25	25	25	15	15	14	14	13	14
Pittsburgh	30	29	29	29	28	28	24	23	24	24	24	23	27	27	27	27	26	26	17	17	16	16	16	16
Temple	32	33	29	33	32	32	26	26	27	26	26	26	29	29	29	29	29	29	14	16	17	18	17	17
Total	31	31	30	29	28	28	26	27	24	24	23	24	29	29	27	26	26	26	15	16	15	15	15	15

1. The average class size for each level is calculated by dividing total classroom student credit hours by total classroom course (assigned) credits.

SOURCE: Data provided by the individual universities, 2014 to 2020.

HISTORICAL TABLE 9

COMMONWEALTH INSTRUCTIONAL APPROPRIATIONS¹
2014-15 to 2019-20
(in millions)

State-related University	2014-15	2015-16	2016-17	2017-18	2018-19	2019-20
Lincoln	\$13.2	\$14.1	\$14.4	\$14.4	\$14.9	\$15.2
Penn State	214.1	224.8	230.4	230.4	237.3	242.1
Pittsburgh	133.2	139.9	143.3	152.9	157.6	165.5
Temple	121.1	146.9	150.6	150.6	155.1	158.2
Total	481.6	525.7	538.8	548.3	564.9	581.0

1. Instructional appropriations include educational and general appropriations. FTE students include in-State and out-of-State undergraduate and graduate students. Excludes medical school data.

SOURCE: Instructional appropriations - Governor's Executive Budget, 2014-15 to 2019-20; data provided by the individual State-related universities 2014 to 2020. FTE students - data provided by the individual universities, 2014 to 2020.

HISTORICAL TABLE 10

**ACADEMIC YEAR TUITION AND REQUIRED FEES FOR FULL-TIME STUDENTS
BY ACADEMIC LEVEL AND RESIDENCE
2014-15 to 2019-2020**

State-related University	Undergraduate		Graduate ¹	
	In-State	Out-of-State	In-State	Out-of-State
Lincoln				
2014-15	\$10,232	\$15,618	\$11,420	\$18,950
2015-16	10,878	16,398	11,420	18,950
2016-17	11,102	16,733	11,420	18,950
2017-18	11,379	17,151	11,615	19,145
2018-19	11,036	16,952	11,420	18,950
2019-20	11,266	17,468	11,420	18,950
Penn State				
2014-15	17,502	30,452	19,746	33,110
2015-16	17,514	31,346	20,270	34,084
2016-17	17,900	32,382	20,912	35,214
2017-18	18,436	33,664	21,752	36,606
2018-19	18,454	34,858	22,578	38,012
2019-20	18,450	35,514	22,994	38,728
Pittsburgh				
2014-15	17,772	28,168	21,542	34,760
2015-16	18,192	28,958	22,060	35,744
2016-17	18,618	29,758	22,578	36,734
2017-18	19,080	30,642	22,060	35,744
2018-19	19,080	32,052	23,696	39,586
2019-20	19,718	33,746	24,480	40,848
Temple				
2014-15	14,696	24,722	15,180	20,544
2015-16	15,188	25,494	16,144	21,832
2016-17	16,274	27,266	16,676	22,526
2017-18	16,658	28,418	17,054	23,048
2018-19	16,970	29,066	17,378	23,588
2019-20	16,970	29,882	17,846	24,236

1. Excludes first-professional level.

SOURCE: Pennsylvania Department of Education, National Center for Education Statistics.

APPENDIX

MODEL OF FTE SALARY COST DETERMINATION

Instructional faculty salary cost per student credit hour, for each academic level and each program area, can be expressed by the following model:

$$\begin{array}{r}
 \text{FTE} \\
 \text{instructional} \\
 \text{faculty salaries} \\
 \text{student credit hours}
 \end{array}
 =
 \begin{array}{c}
 \text{Number of FTE} \\
 \text{instructional faculty} \\
 \hline
 \text{Number} \\
 \text{of courses}
 \end{array}
 \times
 \begin{array}{c}
 \text{Average} \\
 \text{course} \\
 \text{(assigned)} \\
 \text{credit value}
 \end{array}
 \times
 \begin{array}{c}
 \text{Average FTE} \\
 \text{instructional faculty salary} \\
 \hline
 \text{Average} \\
 \text{class} \\
 \text{(section)} \\
 \text{size}
 \end{array}
 \times
 \begin{array}{c}
 \text{Number} \\
 \text{of classes} \\
 \text{(sections)} \\
 \text{Number} \\
 \text{of courses}
 \end{array}$$

The two terms on the right-hand side of this equation illustrate the two different kinds of factors which determine FTE instructional salary cost.

The components of the first term are approximately *constants or constant relationships*. In the short run, neither the number of faculty per course nor the number of faculty per average course (assigned) credit value can be readily varied to influence FTE instructional salary cost.

The second term contains *control variables*: average FTE instructional faculty salary, average class (section) size, and the number of classes (sections) per course. To at least some degree, each of these variables can be controlled by university administrators to affect FTE instructional salary cost. Adjustments in the number of classes (sections) per course are an alternative to permitting average class sizes to change with changes in enrollment.

Average instructional faculty salary cost per FTE student, or FTE instructional salary cost, equals the FTE instructional salary cost per student credit hour times 30 for undergraduate students, and times 24 for graduate students.